

The background of the image is a construction site. In the foreground, there are silhouettes of various construction cranes and a tall lattice tower against a bright blue sky filled with scattered white clouds. In the background, two tall, modern buildings are visible. The overall scene is one of active construction and infrastructure development.

BUSINESS INTRODUCTION

T N CONSTRUCTION

ONE STOP SOLUTION FOR ALL RENTAL EQUIPMENTS



Content



About Us

Our Mission and Vision

Our Services

Project

Clients

Contact Us



We Believe in our team



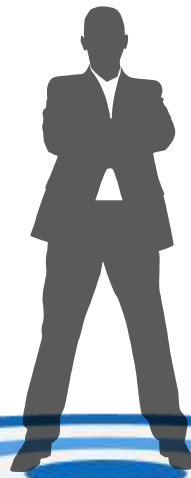
About Us

T N Construction is a Systematic & Reliable Equipment Rental Company for single point contact of one stop solutions for supplying any type of equipment related to construction work. We have also dynamic professional team to deliver Sheet Piling Work at project site. We cater to various industry verticals like constructions, civil work, mechanical engineering. The skilled operational staff ensures superior services and maintain the schedules of the valued customers.



Our Mission

Our Mission is to provide the optimum Equipment, People and Solution to enable our customers to safely build better future. We are available 24/7 to assess your needs and recommendations the right equipment for the right job for your next construction project and get the quality equipment you deserve.



Our MOTTO

Customer first is the Motto of our organization. We thrive to provide the complete support to our client with safety, efficiency and productivity of equipment. We aim to provide innovative solution to the construction equipment industry and be a leader in the field of complete equipment solution providers.



Why Choose us?

We create milestones in the progress of infrastructure. We set our goal to become a worldwide entity, with services of unmatched quality. We also ensure strict adherence to the safety as well as maintain work productivity on site.



OUR SERVICES



01

Rental Equipment
Service

02

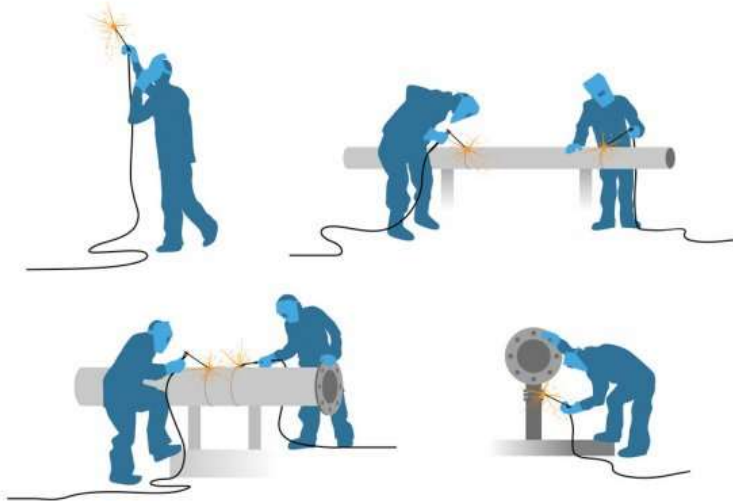
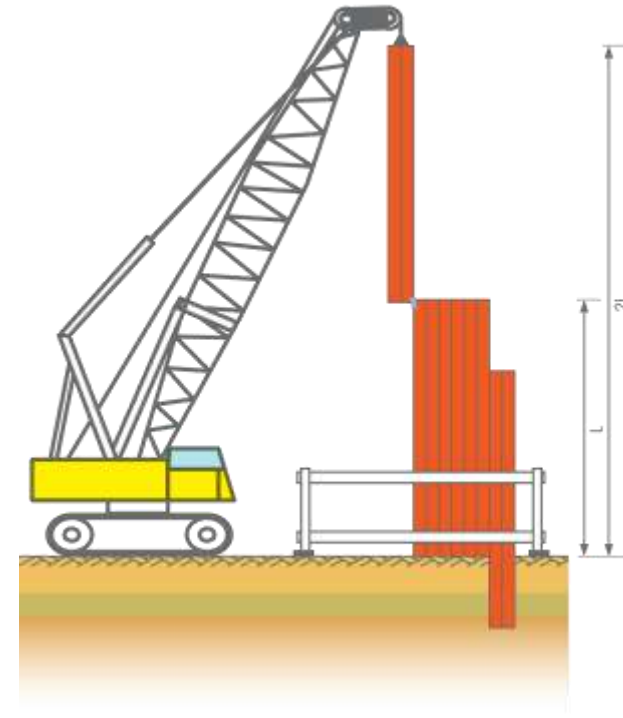
Sheet Piling

03

Transportation
Work

04

Steel Structure
Fabrication





RENTAL EQUIPMENT SERVICES



Cranes

- Tyre mounted Crane 14 MT to 400MT and above.
- Crawler Crane 60 MT to 400 MT and above.
- Tower crane and Mobile tower crane.
- Truck mounted crane.

Concrete Equipment

- Batching Plant
- Mini batching plant
- Concrete Pump
- Boom Placer
- Transit Mixer
- Self Loader Transit Mixer

Earth Moving Equipment

- Excavator – Bucket and Breaker
- Wheel loader and Backhoe loader
- Skid Steer Loader
- Roller – Tandem & Soil compactor
- Dozer and Grader
- Truck and Dumper
- Water Tanker



PROJECTS



On Going Project

- Bihar New Ganga Bridge Project – L&T Construction
- Railway Project, Jharkhand – KEC International
- Chennai Metro Project – Tata Projects Limited
- Talcher Fertilizer s Ltd, Angul – Tuaman Engg.Ltd.
- Tata Steel – Kalinganagar – Tata Projects Ltd.
- Kosi River Bridge Project – Afcons Infrastructure Ltd.
- Patna Metro Project – Daewoo-L&T
- Kalyani Express Way – Gammon India Ltd.
- Flyover Project, Patna – Afcons Infrastructure Ltd.





PROJECTS



On Going Project

- River Project, Amta – L&T
- Central Coalfield Ltd ,Urimari – L&T Limited
- Pakal Dul Hydro Electric Project , Jammu & Kashmir- L&T Limited
- Water Pipeline Project, Garhwa Jharkhand, L&T Ltd.
- IOCL Project ,Barauni, Bihar , L&T Ltd.
- Sagasahi Mines Project, Odisha, , L&T Ltd.
- Water Pipeline Project, Sambhalpur, Odisha , L&T Ltd.
- Aluminium Plant Project ,Lapanga, Odisha L&T Ltd.





PROJECTS



Completed Project

- Kolaghat Thermal Power Station, West Bengal
- ISRO, Sriharikota, Andhrapradesh
- Power Transmission Project, Hooghly(WB)– L&T Construction
- Power Transmission Project, Purulia (WB)– L&T Construction
- Power Distribution Project , Digha (WB) – L&T Construction
- Building Project, Vizag – L&T Construction
- Tata Steel Noamundi, Jharkhand– Tata Projects Ltd
- Tata Steel Khondbond,Odisha – Tata Projects Ltd.
- Banda Dam Project, MP – Tata Projects Ltd
- ONGC Bokaro – Tata Projects Ltd
- Adani Power, Sahebgaung – RKEC
- Kolkata Airport, West Bengal





- Trump Tower Project, Kolkata – MFAR Construction
- Water Pipe Line Project, Jirapur (MP) – L&T Construction
- Haldia Port-Ripley & Company Stevedoring & Handling Pvt. Ltd.
- Under Ground Cabling, Vizag – L&T Construction
- Railway Project, Kharagpur – KEC International
- Tata Cancer Hospital, Ranchi – MFAR Construction
- Building Project, Vizag – Tata Projects Ltd.
- Medical College, Keonjhar – Tata Projects Ltd.
- Medical College, Bhawanipatna – Tata Projects Ltd.





- **HPL Building Project , Kolkata – Consync Infra Pvt Ltd.**
- **Kerandari, Singrauli – L&T Construction.**
- **Jagannath Mandira Project- Puri – Tata Projects Ltd.**
- **Vedanta Aluminium Ltd., Lanjigarh- L&T Ltd.**
- **Building Project, Nagpur – D P Jain & C. Infra. Pvt. Ltd.**
- **Water Project, Jajpur – L&T Ltd Haldia Port-Ripley**





SHEET PILING WORK



PROJECTS

- HPL Office Building Project - Salt Lake , Kolkata
- Bengal Ultimate Resort LLP - Newtown , Kolkata
- HDFC Bank Building Project - Rajarhat , Kolkata
- Water Treatment Plant, WBPHEd - Halisahar , Nadia
- Water Treatment Plant ,Garden Reach
- Biswa Bangla Gate, New Town - WBHIDCO

We are an innovative and dynamic group, which specializes in all facets of geotechnical construction projects. Engineering excellence and constant innovation have helped us to grow in the field of Sheet Piling work.

We pride ourselves on working in partnership with our clients to provide the best service possible at any time or place.

We offer a comprehensive range of piling solutions designed to meet all kinds of requirements and provide effective solutions for many piling projects.





SHEET PILING WORK



PROJECTS

- City Centre 2 Under Pass – WBHIDCO
- Irrigation Project,
- Clock Tower Subway, Lake Town - PWD
- Tallah Bridge Project, Kolkata - PWD
- Railway Project, Majerhat Kolkata - Metro Rail
- KMDA Project-Kamalgachi
- Police Head Quarter Proj., Alipur
- 250 MLD Water Treatment Plant, Uttarpara
- South Eastern Railway Project, Jaleswar
- Air Force Station, Ambala Cantt.
- SCB Medical College Project , Cuttack Odisha





FABRICATION WORK



We are committed and focus as a team on Quality, Innovation, Technology and Stakeholder's growth through providing turnkey solutions in Steel structures fabrication work. We are providing engineering solutions to a host of competent players across the country. Our focus on maintaining a Clean and Green Environment, besides implementing health and safety measures.

PROJECTS

- Kalyani Alloy Steel Ltd, Kalyani, West Bengal.
- Vrinda Engineering, Panagarh, West Bengal.





TRANSPORTATION WORK



The construction industry India is massive and continues to grow at a furious rate. With no sign of slowing down on the horizon, building products are in high demand. That requires solid and steady support to transport a variety of construction materials safely and efficiently to and from sites. We provide our clients flexible, responsive and affordable services. We use our operating knowledge to offer extraordinary solutions as unique as our client's needs. T N CONSTRUCTION is specialized in offering domestic goods transportation as well as Project Site Transportation. We house a fleet of trained and knowledgeable work-force. Our main priority while serving our customers is given to the aspect of safety.





OUR CLIENTS





CONTACT US



30/6, RAJDANGA MAIN ROAD, SECTOR – F,
GROUND FLOOR , KOLKATA- 700107(WB)



Mob : +918017349242
+917003659898

E - Mail : info.tnckol@gmail.com
info@tnconstruction.co.in



CREDENTIAL



AN ISO 9001 : 2015 CERTIFIED

MSME REGISTERED

REGISTRATION NO : "WB-12D-0002848"