



Surgiworld Health Care Systems



EXCEPTIONAL **Care Close to You**

www.surgiworld.co.in

ABOUT US

Surgiworld Health Care Systems (SWHCS)

SWHCS was formed by young Entrepreneur Mr. Prince Bhuptani in 2006 with vision to serve Health Care Professionals at its best with dedicated round the clock Service and Quality Products.

SWHCS believes in innovation with affordability and accessibility. We are leading health technology enterprise that has been operating now across India to improve health care.

Our team believes in dedication towards Services and are self motivated to serve health care in a better way. We provide technological advancements to hospitals, individual healthcare providers, independent clinics with worlds best products related to General Surgeons, Gynecologists, ENT Doctors, Orthopedics, Urologist & Arthroscopy doctors.

By simplifying and expanding our business, we are rapidly moving to establish ourselves as a global leader in health technology. We and our team are committed to build a sustainable business that delivers value by offering best available health technology solutions.



LEADERS



Prince Bhupatani
(MANAGING DIRECTOR)
M: +91 9898421213
prince.bhuptani@surgeworld.co.in



Foram Bhupatani
(CEO)
M: +91 9724409999
foram.bhuptani@surgeworld.co.in



Rakesh Vala
(NSE/ENDO Business Unit Head)
M: +91 9904806671
rakesh.surgeworld@gmail.com



Rimpal Gothi
(Sr. Admin Head)
M: +91 9904806674
surgeworld.office@gmail.com



Rajesh Shah
(Sr. Accountant)
M: 079-40030999
accounts@surgeworld.co.in

Sales Team Ahmedabad/Saurashtra



Anil Prajapati

(Area Sales Manager)
M: +91 8140278118



Mayur Prajapati

(Area Sales Manager)
M: +91 8347979743

Sales Team Central Gujarat



Chirag Priyadrshi

(Area Sales Manager)
M: +91 8866 73658



Tejas Patel

(Area Sales Manager)
M: +91 9409403558

Sales Team South Gujarat



Brijesh Malaviya

(Area Sales Manager)
M: +91 9904806622



Ruchit Badheka

(Area Sales Manager)
M: +91 8511345054

Support Team



Pravin Chauhan



Mitesh Vala



Sumit Makwana



Ravi Jogi



Hitesh Patel



Sanwar Rabari



Yashpal Singh



Nitin Rathod



Harish Jogi



Darshan Shah



TABLE OF CONTENTS

1. Laparoscopy Solution

→ 1688 4k Aim Camera System	01
→ 1588 Aim Full Hd Camera System	01
→ Spy Portable Handheld Imaging System	02
→ Precision Led Light Source	03
→ L 10 Led Light Source	03
→ L 11 Led Light Source	03
→ 4k 58" Widescreen Surgical Medical Graded Monitor	04
→ 4k 32" Led Medical Graded Monitor	04
→ Vision Pro 26" Led Medical Graded Monitor	04
→ Insufflators (Pneumosure)	05
1) 20 Liter	05
2) 45 Liter	05
→ Pneumoclear	05
→ Laproscopes	06
→ Teac Recording System	06

2. Endoscopy Solution

→ Defina Epk-3000 Video Processor	07
→ Epk-I5000 Video Processor	07
→ Epk-I7010optivista High Definition Video Processor	07
→ Endoscope	08
1) Gastro Scope	08
2) Colono Scope	08
3) Duodenoscope(Ercp Scope)	08
4) High Resolution Video Bronchoscopes	10
5) Ultrasound Video Gastro Scope Eus-J10	10
6) Ultrasound Video Bronchoscope Eb19-J10u	10
7) Portable Fibre Intubation Endoscopes	11
8) High Resolution Fiber Bronchoscopes	11

3. Neuro-Spine-Ent Solution

→ Core 2.0	12
→ High Speed Drills (Electric And Pneumatic)	12
→ Attachments And Cutting Accessories	12
→ Sonopet® Ultrasonic Aspirator	14
→ Navigation Sysytem	16
→ Bone Mill	17
→ Rem B Onco Saw Amd Micro Drill	17
→ Malis Genrator And Irrigator	18
→ Silverglide® Bipolar Forceps	18
→ Microdebrider	18
→ Nasopore® Bioresorbable Nasal Dressings	19
→ Portmann Chuck (Skitter)	19

4. Arthroscopy Solution

→ Knee Solution	20
1) Acl (Anterior Cruciate Ligaments)	
2) Meniscus Repair Solution	
→ Shoulder Solution	21
1) Bankart Repair	
2) Rotator Cuff Repair	
→ Capital Equipment	22
1) Arthroscopy Shaver Set	
2) Crossflow Integrated Arthroscopy Pump	
3) Cross Fire 2 Integrated Resection & Energy System	
4) Cutter	
→ Arthroscopy Scope Set	22
→ Arthroscopy Instruments	23
1) Conquest Family (Punch/Scissors/Graspers)	
2) Champion Shoulder Instruments Set	
3) Champion Suture Passer	
4) Champion Slider Needle/Handle	
5) Acl/Pcl Instruments	
6) Nano Pass Suture Manager (Crescent/45 Degree Left /45 Degree Right)	
7) Versitomic Flexible Reaming System	
8) Champion Sling Shot (45 Degree Left/45 Degree Right/70 Degree Up)	
9) Small Joint Instruments Set	
10) Micro Fx Ocd (Osteochondral Drill)	

5. Orthopeadic Solution (Hdso)

→ System 8 Power Tools	24
→ Ezout Acetabular Revision System	24
→ System G Power Tools	25
→ Smart Pump Tourniquet System	26
→ Interpulse: Pulsed Lavage	27
→ Flyte® Steri-Shield Personal Protection System	27
→ Cutting Accessories	27

6. Recon

→ Primary Knee Joint	28
→ Complex Primary & Revision	28
→ Mega Prosthesis	28
→ Hemi Replacement	29
→ Primary Hip Replacement	29
→ Revision Hip Replacement	30

7. Bard

→ Capsure	31
→ Ventralight St	31
→ Ventralax St	31
→ 3d Max	31
→ Soft Mesh	32

8. Sterilization Containers

32

LAPAROSCOPY

1688 4K AIM CAMERA SYSTEM



- Advanced Imaging Modality
- Increased Efficiency.
- Higher Dynamic Range.
- Wider Color Gamut.
- 2 Times The Resolution Of Hd 1920x1080 I.E.3840x2160.
- 8 Million Pixels In 4k Compared To 2 Million In Hd.
- 4k Sensor In 4k Camera.
- White Ring Technology.
- Aim Technology.

1. SPY OVERLAY 4. IRIS
2. SPY CONTRAST 5. AUTO-LIGHT
3. SPY ENV

1588 AIM FULL HD CAMERA SYSTEM

- High Definition Video With 1920x1080p Native Resolution.
- CMOS 3-Chip Camera Technology Designed For Enhanced Light Sensitivity.
- 4 Programmable Button On The 1588 Aim Camera Head To Control Picture Video And L10 LED Light Source With 19 Functionalities.
- Integrated Desaturation Capabilities To Desaturate Red Coloration In Particularly Red Cases.
- Control Of ICG Viewing From The Camera Head Buttons Including Backlighting And Env Gain.
- Ergonomic, Lightweight Design For Minimally Invasive Surgery.
- 9 Cross- Specialty Setting For Optimal Color Resolution And Brightness.



What is AIM?

The **Advanced Imaging Modality (AIM)** Platform Provides Clinically Differentiated Visualization, Designed To Safeguard And Assist In Improving The Identification Of Critical Anatomy. The 1588 AIM Platform Includes IRIS, ENV, And CLARITY Real-Time Video Enhancements Designed To Enable Surgeons To See And Do More.

- 1) ENV 3) DRE
- 2) IRIS 4) DESAT

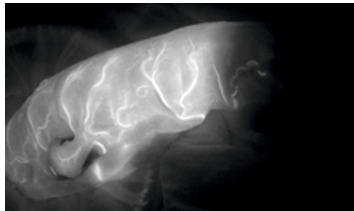


LAPAROSCOPY

SPY-PHI

SPY Portable Handheld Imaging System

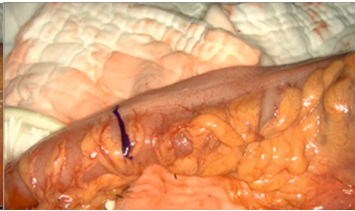
SPY Portable Handheld Imager (SPY-PHI) utilizes SPY Fluorescence Imaging technology and allows surgeons to visualize blood flow in vessels and related tissue perfusion during plastic, microsurgical, reconstructive and gastrointestinal procedures.



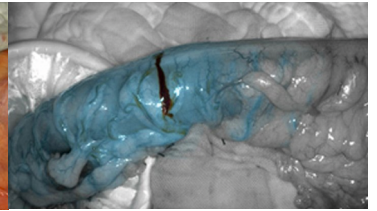
SPY Fluorescence Mode



Overlay Mode



White Light



Color Segmented Fluorescence
(CSF) Mode

LAPAROSCOPY

PRECISION LED LIGHT SOURCE



- A high intensity light source is a requisite for a satisfactorily bright laparoscopic image.
- It simplifies the surgeries by enhancing the brightness as well as clarity. Simple user interface.
- Larger capacitive LCD touchscreen.
- Control from stryker camera head.
- Reduced lifetime ownership cost over xenon light sources.

L10 LED LIGHT SOURCE

- Substantial cost saving benefits in overall lifetime ownership compared to a xenon light source requiring bulb replacements.
- More eco-friendly due to the elimination of traditional xenon bulb waste.
- Maintains strong white light output over course of use.
- Enable users to visualize white light, infrared light, and ICG fluorescence.
- Integrated infrared light fiber and integrated ICG fluorescence capabilities.
- Adjustable light intensity in both white light mode and in ENV mode.
- Safelight technology designed to increase patient safety.
- Intuitive capacitive LED touch screen user interface.



L 11 LED LIGHT SOURCE



- Substantial cost saving benefits in overall lifetime ownership compared to a xenon light source requiring bulb replacements.
- More eco-friendly due to the elimination of traditional xenon bulb waste.
- Maintains strong white light output over course of use.
- Enable users to visualize white light, infrared light, and ICG fluorescence.
- Integrated infrared light fiber and integrated ICG fluorescence capabilities.
- Adjustable light intensity in both white light mode and in ENV mode.
- Safelight technology designed to increase patient safety.
- Intuitive capacitive LED touch screen user interface.

LAPAROSCOPY

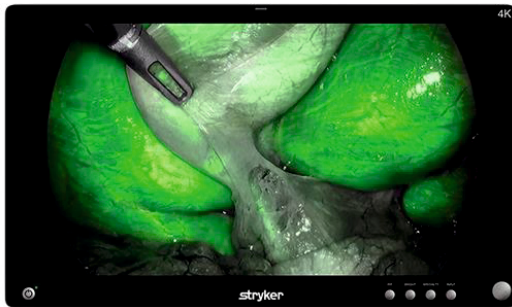
4K 58" WIDESCREEN SURGICAL MEDICAL GRADED MONITOR



This monitor uses an LCD panel with an energy-efficient LED backlight, a brightness of 300 cd/m² and a contrast ratio of 1000:1. It displays in 4k uhd resolution (3840 x 2160 pixels), and faithfully reproduces surgical images in high definition for endoscopy and microsurgery.



4K 32" LED MEDICAL GRADED MONITOR



- A Wide Screen LED Surgical Display That Can Support A Maximum Resolution Of 4k (4096 X 2160).
- 9 Preset Specialty Settings.
- On-Screen User Interface With Shortcut Keys.

VISIONPRO 26" LED MEDICAL GRADED MONITOR



26" IPC ALPHA PANEL WITH LED BACKLIGHT

- 16:9 aspect ratio.
- 1920 x 1080 native resolution.
- 9 preset specialty settings.
- On-screen user interface with shortcut keys.
- Custom gamma curves.
- Integrated protective screen layer with 3h hardness.
- Double-sided anti-reflective coating.
- Built-in handles to aid in monitor placement.
- 30% thinner than previous generation 26" displays.

LAPAROSCOPY

INSUFFLATORS (PNEUMOSURE)



Feature	Benefits
Real time pressure sensing	Stryker pneumo sure insufflator regulates the flow of co2 from a pressurizes reservoir and monitors intra-abdominal pressure and provide real time pressure sensing.
High flow rate of 45 L/M	Designed to handle a wide variety of cases including bariatric. Bariatric mode allows for a high flow rate of 45 L/M.
Integrated tube design	Manage optimal pressure and flow rate enabling greater accuracy during procedure.
New touchscreen	Interface enables quick and easy navigation through user menu as well as better viewing angles. Redesigned color benefits is add on feature.
Size	20 LITER 45 LITER

PNEUMOCLEAR



Intelligent insufflation

- Differentiated operating modes.
- Introduction of Robotic and tamis.

Integrated smoke evacuation

- Designed to maintain a stable surgical site while removing surgical plume.

Heated and humidified co2

- Conditioned co2 designed for reduced laparoscope fogging and improved internal moisture.

LAPAROSCOPY

LAPROSCOPES



Precision Scope



AIM 4K Scope

Extended length of 45cm, optimal for bariatric procedures and single incision surgery

Aspherical Lens Technology: minimizes optical distortion.

- Lenses improve optical transmission to produce a more accurate representation of surgical field.
- Reduces fishbowl effect seen from magnification.

Center to Edge Resolution: confidently utilize the entire surgical video output.

- Focal points of differing wavelengths are aligned to give a vivid representation of color.
- High level of optical clarity is maintained across the entire surgical image.

Sapphire Window provides scratch resistant protection at both proximal and distal windows enhancing image quality.

Laser Welded Joints to prevent.

Condensation to occur and no.

Foggy image appears.

Size		
Laparoscope	Ent scope	Hystero Scope
10mm 30 Degree	4mm 30 Degree	4 mm (30, 12, 0 Degree)
10mm 0 Degree	4mm 0 Degree	2.9 mm (30, 12, 0 Degree)
10mm 45 Degree	4mm 45 Degree	Obturator
5mm 30 Degree	4mm 70 Degree	Operatig /
5mm 0 Degree	4mm 70 Degree	Diagnostic Sheath

TEAC RECORDING SYSTEM



Intuitive & Easy to Use

Auto Sensing detects Input / Output & Video Resolutions "automatically"

Wide range of **Recording Resolutions**

- 640x480 – 1920x 1080 (30Hz/29.97Hz): Undiluted Recording Resolution

- 1920x1200 (Resize to 1728x1080) : Supported Input resolution

Multiple HD & SD inputs / Outputs (SDI, DVI-D, S-Video and Composite)

Simultaneous recording to multiple media (up to 2 External USD drives & 1 Internal HD

Networking (FTP & CIFS) RJ45 10/100/1000 Ethernet

Remote Control, Foot-Switch, Card/Barcode reader and Keyboard (Optional)

Compliance with Medical Standards

ENDOSCOPY

DEFINA EPK-3000 VIDEO PROCESSOR

- HD video output: DVI-D (1920 x 1080i).
- SD video output: RGB, Y/C, composite.
- i-scan virtual chromo endoscopy: Quick access via i-scan keys 1, 2, 3.
- Light source: 150W Xenon.
- Image Enhancement: Digital Image Enhancement: i-scan (SE, TE, CE) Enhances the endoscopic view of mucosal surface and vessel patterns.
- Dynamic Range Expansion: Off, Low, Med, High Adjustment for optimising image brightness in darker areas of an image.
- Freeze Scan: Off, Low, Med, High Selects the sharpest image from a series of images temporarily stored in the processor memory, whenever an image is frozen.
- Digital Zoom: Magnification options: Off, 1.2x, 1.5x, 2.0x.
- Compatible endoscopes : 90K and J10 Series video naso-pharyngo-laryngoscopes / 70K, 75K, and J10 Series video bronchoscopes.



EPK-i5000 VIDEO PROCESSOR



- HD+ video outputs: SXGA (native resolution) via DVI-D, VGA.
- Standard video outputs: RGB, Y/C, composite.
- User interface: Control panel, keyboard.
- i-scan virtual chromo endoscopy: Quick access via i-scan keys 1, 2, 3.
- Light source: 300W Xenon.
- Dimensions (W x H x D / weight): 400 x 205 x 480 mm / 22.0 kg.

EPK-i7010 OPTIVISTA HIGH DEFINATION VIDEO PROCESSOR

- HD video outputs: 1080i via HD-SDI, DVI-D or SXGA via DVI-D, VGA.
- External device interface: USB (Front x 1, Rear x 2) and RJ45 (Ethernet).
- User interface Touch screen, keyboard.
- Image Enhancement Endoscopy function: i-SCAN 1, i-SCAN 2, i-SCAN 3, and OE Optical Enhancement.
- Compatible Video Endoscopes: 90K/90i/i10 Series Gastro scopes and Colono scopes.
- Lamp: 300W Xenon Lamp.
- Dimensions [W x H x D / weight]: 400 x 205 x 520 mm / 21.5 kg.



ENDOSCOPY

ENDOSCOPE

Gastro Scope/Colono Scope



Duodenoscope (ERCP Scope)



KP Series Gastrosopes								
Model	Insertion tube [ø mm]	Instrument channel [ø mm]	Working length (mm)	Total length (mm)	Field of view (degrees)	Focal range (mm)	Angulation Up / Down	Angulation Right / Left
EG-290Kp	9.8	2.8	1050	1373	140	5 - 100	210/120	120/120
KP Series Colonoscopes								
EC-380LKp	13.2	3.8	1700	2023	140	3 - 100	180 /180	160 /160
Duodenoscopes								
ED-3490TK	11.6	4.2	1250		100		120/90	105/90

90K Series Gastroscope								
Model	Insertion tube [ø mm]	Instrument channel [ø mm]	Working length (mm)	Total length (mm)	Field of view (degrees)	Focal range (mm)	Angulation Up / Down	Angulation Right / Left
EG-2790K	9	2.8	1050	1373	140	4 - 100	210/120	120/120
EG-2990K	9.8	2.8	1050	1373	140	4 - 100	210/120	120/120
90K Series Colonoscopes								
EC-3490LK	11.6	3.8	1700	2023	140	3-100	180/180	160/160
EC-3890LK	13.2	4.2	1700	2023	140	3-100	180/180	160/160



ENDOSCOPY

The i10 Endoscope Series

High Performance i10 Series HD+ Endoscopes

→ Next Generation Megapixel CCD for Improved HD+ Image Quality

Crisp, clear and bright endoscopic image combined with exceptional field of view for a superior visualization of the mucosa. Gastroscope, colonoscopes and, the first-to-market outstanding HD+ duodenoscope. Examination and close visualisation of suspicious mucosal details.

→ Expanded Therapeutic Option

Excellent Therapeutic Option in all standard and slim endoscopes – For your daily challenges, the best ratio of external diameter & working channel combined with Water Jet System.

→ Improved Graduated Flexibility (GDF)

Improved flexibility of the insertion tube to increase patient comfort and examination performance during every colonoscopy.

Gastro scopes i10:

Model	Insertion tube [ø mm]	Instrument channel [ø mm]	Working length (mm)	Total length (mm)	Field of view (degrees)	Focal range (mm)	Angulation Up / Down	Angulation Right / Left
EG27-i10	9	2.8	1050	1366	140	2-100	210/120	120/120
EG29-i10	9.8	3.2	1050	1366	140	2-100	210/120	120/120

Colonoscopes i10:

EC34-i10L	11.6	3.8	1700	2016	140	2-100	180/180	160/160
EC38-i10L	13.2	3.8	1700	2016	140	4-100	180/180	160/160

Duodenoscopes i10

ED34-i10T2	11.6	4.2	1250		100	Apr-60	120/90	105/90
------------	------	-----	------	--	-----	--------	--------	--------

EG17-J10 Pediatric Gastroscopes

Model	Insertion tube [ø mm]	Instrument channel [ø mm]	Working length (mm)	Total length (mm)	Field of view (degrees)	Focal range (mm)	Angulation Up / Down	Angulation Right / Left
EG17-J10 Pediatric Gastroscope	5.7	2	1100		140	3-100	210/120	120/120

ENDOSCOPY

High Resolution Video Bronchoscopes



Model	Distal end diameter(mm)	Insertion tube	Instrument channel [ø mm]	Working length (mm)	Field of view (degrees)	Depth of field(mm)	Angulation Up / Down
EB15-J10	5.4	5.2	2	600	120	3-100	210/130
EB19-J10	6.1	6.4	2.8	600	120	3-100	180/130

Ultrasound video Gastro scope EUS-J10



Ultrasound video Broncho scope EB19-J10U



Ultrasound Video Gastro scope EUS-J10 line-up											
Model	Direction of view	Field of view	Depth of field(mm)	Tip angulation up/down	Distal end width(mm)	insertion portion width(mm)	instrument channel width(mm)	insertion portion working length(mm)	Total length (mm)	Frequency(MHz)	Scan angle
EG38-J10UT	Forward oblique (45°)	120	3-100	160/130	14.2	12.8	4	1250	1566	5-13	150
Ultrasound Video Bronchoscope EB19-J10U											
EB19-J10U	Forward oblique (45°)	100	2-50	120/90	7.3	6.3	2.2	600	875	5-13*	75

ENDOSCOPY

Bronchoscopes



Intubation Scope



Portable Fibre Intubation Endoscopes:

Type	Ultra- Slim	Slim	Standard	Standard	Large Channel
Model	FI-7 RBS	FI-9 RBS	FI-10 RBS	FI-13 RBS	FI-16 RBS
Field of view [°]	95	90		95	
Depth of field [mm]	3-50				
Tip deflection up/down [°]	130/130			3-50	
Insertion tube [ø mm]	2.4	3.1	3.5	4.2	5.2
Distal end [ø mm]	2.4	3	3.4	4.1	5.1
Min. instrument channel [ø mm]	-	1.15	1.31	1.72	2.55
Working length [mm]	600				

High Resolution Fibre Bronchoscopes

Type	Slim		Routine	Portable		Therapeutic	
System	FB-8V	FB-10V	FB-15V*	FB-15BS	FB-18BS	FB-18V*	FB-19TV*
Field of view (°)	100	120	120	100		100	
Focal range (mm)	2-50	3-50					
Diopter	+3 ~ − 8						
Tip deflection (°) up/down	180/130				180/90	180/130	
Ø Distal end (mm)	2.7	3.4	4.9	4.8	5.9		6.2
Ø Insertion tube (mm)	2.8	3.5	4.9		6		6.2
Ø Instrument channel (mm)	1.15		2.1	1.95	2.55	2.7	3
Working length (mm)	600						
Overall length (mm)	900		900	880		900	

NEURO-SPINE-ENT

CORE 2.0

- Up to 3 handpieces and 2 footswitches can be connected at a time
- Two handpieces and the Bone Mill can be operated simultaneously
- Offers integrated irrigation
- Competible handpieces
 - Signature (Neuro and Spine Surgery)
 - Essx Microdribrider (ENT Surgery)
 - REM B Saw (Onco Surgery)
 - Formula® Shaver (Arthroscopy Surgery)
 - Bone mill (Spine Surgery)



HIGH SPEED DRILLS (ELECTRIC AND PNEUMATIC)

Pi DRIVE

- 75,000 RPM
- 5.4 in oz torque
- 95% Acceleration
- No Handswitch
- 35% brake



Pi DRIVE+

- 75,000 RPM
- 5.5 in oz torque
- 95% Acceleration
- Optional Handswitch
- 95% brake



MAESTRO AIR (PNEUMATIC)

- 6.7 in oz torque
- up to 75,000 RPM
- Increased maneuverability
- Reduction in weight



SUMEX MS 1 HANDPIECE

- 75000 Rpm
- Optional handswitch
- I.d touch software



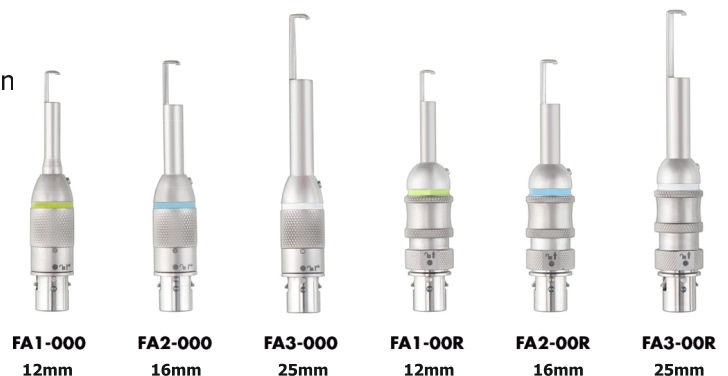
ATTACHMENTS AND CUTTING ACCESSORIES

FOOTED ATTACHMENTS (Duragurds)

- Foot is designed to protect dura mater during bone cutting
- Longer neck design allows for better line of sight and maneuverability in tight anatomy



D-58 Duragurds



NEURO-SPINE-ENT

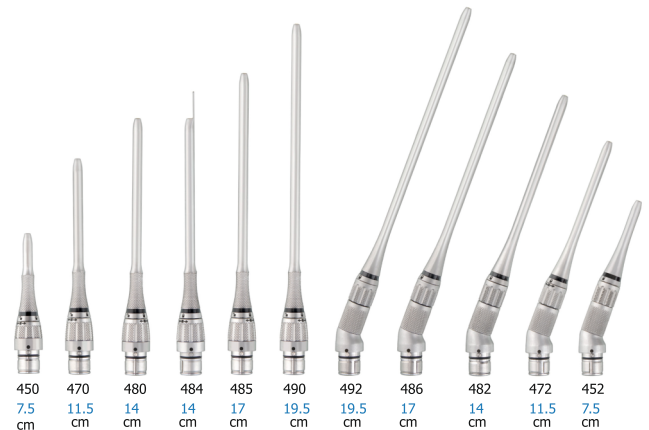
NON FOOTED ATTACHMENTS

- Used for free hand drilling with the cutting accessories used with footed attachment range



ELITE ATTACHMENTS

- Used in any scenario where surgeon is cutting bone with a bur
- One length burs fits all Elite attachments



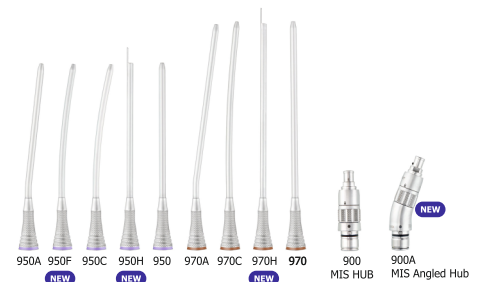
HEAVY DUTY ATTACHMENTS

- For use with Stryker TPS burs
- Can be used for metal cutting in spine/ortho procedures



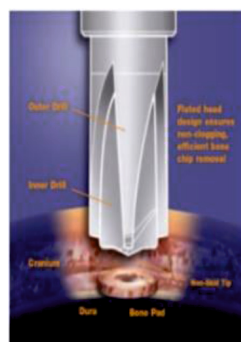
MIS ATTACHMENTS

- Used in surgery where access and visualisation are tight
- Color coding to match burs
- Accepts only Signature MIS burs



PERFORATOR BIT

- Outer diameter=14mm
- Inner diameter= 11mm
- Contraindications: Thin, diseased or fragile bone
- Cautions: adherent dura
- High intracranial pressure, or other abnormalities in the area of penetration



PERFORATOR CHUCK



ROUND BURS



SOFT TOUCH

Smooth cutting

Most popular bur
10 Flute Geometry



AGGRESSIVE

Rapid Cutting

8 Flute Geometry



PRECISION

25% Reduced Chatter

Smooth & fast cutting



ROUND

Also known as
Multi Flute

Wavy flutes with notches



CARBIDE

Wavy flutes with
notches

VERY Stable
Tungsten carbide

NEURO-SPINE-ENT

DIAMOND BURS

- Used in areas of delicate anatomy
- Available in different grit sizes
- Require lots of irrigation
- Regularly used in ENT



MATCH HEAD BURS



- Predominantly used in spine and pediatric work.
- Provides controlled, delicate dissection
- May be used close to delicate soft tissues.
- Aggressive sides with smooth cutting

ACORN BURS

- Most commonly used for bur hole in Craniotomies
- Curved design allows for varied cutting characteristics with varied approach angle.



MIS BURS



- Used in areas where access or visualization are difficult, eg. Transnasal or MIS Spine surgery
- Largest MIS burs on the market: up to 5mm head

SONOPET® ULTRASONIC ASPIRATOR

CONSOLE

- Multiple handpiece frequencies allow tissue selectivity during in-situ evacuation around delicate areas or for aggressive removal of fine bone
- Suction, Irrigation and Ultrasonic functions can be used alone or simultaneously by using the SYNC mode
- Individual linear control of each output enables user to fine tune power balance



Proprietary LT technology

Longitudinal + Torsional Vibration

SONOPET is the first ultrasonic aspirator to effectively address soft tissue and fine bone dissection by coupling longitudinal oscillation and torsional vibration.



NEURO-SPINE-ENT

Universal Handpiece

**Universal angled handpiece
25khz**



**Universal angled handpiece
35khz**



**Universal straight handpiece
25khz**



- Lightweight, ergonomic design provides superb tactile feedback and requires no external cooling.
- 25kHz Universal handpiece partnered with an additional 34Khz handpiece, allows for tailoring of instrumentation to specific tissue/procedure.
- Frangible tip covers for improved visualization and access.
- Large selection of specialty tips available

11 compatible tips ...ranging from soft tissue, to bone, to transsphenoidal length

Soft Tips



Straight Micro Diameter



Superlong Straight



Spetzler™ Barracuda



Superlong Barracuda

Bone Tips



Payner™ 360



Spetzler™ Claw



Nakagawa Serrated Knife



Knife



Serrated Knife



Serrated Aggressive Knife



Payner™ Superlong 360

NEURO-SPINE-ENT

NAVIGATION SYSTEM

Accuracy and Control

Stryker's proprietary tracking technology has produced the most accurate optical navigation camera on the market.¹ When that industry-leading accuracy is combined with Stryker Navigation's smart instruments, the surgeon is able to completely control the software from the sterile field. The Stryker NAV3i delivers flexible surgical solutions to cranial, spine, ENT, orthopaedic and trauma procedures.

Features Built for Today and Tomorrow

- Stryker's proprietary navigation camera with active technology
- 32" full HD surgeon monitor
- Navigation camera arm with increased range of motion makes it easier to accommodate various procedures and approaches
- Built-in LiveCam allows for easy positioning of the navigation camera and smart instruments
- IO Tablet user interface with touch capability
- Footprint and overall design helps maximize space in the OR
- Uninterruptible power supply (maximum six minutes)
- Industrial PC with upgraded processing speed and 60% more RAM than legacy platform
- Industrial PC with upgraded processing speed and 60%
- Wireless integration - DICOM query/retrieve and DICOM client functionality for smooth integration into the hospital network
- HDMI output



NAV 3 PORTABLE



NAV 3i

NEURO-SPINE-ENT

BONE MILL

Optimizing efficiency

- Single-pass cutting action enables uniform particulate size with low temperature bone exposure
- Collection tray maximizes bone output during the milling cycle
- Compatible with a wide range of Stryker's surgical instruments



Fine blade



Bone Particulate up to 3.2mm

Medium blade



Bone Particulate up to 5.0mm

Coarse blade



Bone Particulate up to 8.0mm

REM B ONCO SAW AMD MICRO DRILL

The new Titanium Lineup Includes Three Dedicated, High Performance Saws Specically Designed for Exceptional Ergonomics, Power and Agility



RemB Sagittal Saw

Rotating, indexing head for maximum blade positions

Special mount facilitates larger blade



RemB Oscillating Saw

Toolless blade mount



RemB Reciprocating Saw

Easy, intuitive insertion/removal of blades without tools



RemB Micro Drill



Straight/Angled attachments



TPS CORD



Blades

NEURO-SPINE-ENT

MALIS GENRATOR AND IRRIGATOR

- A waveform is the formation of power output from generator to forceps
- Stryker Mails has a patented waveform to deliver power in a precise, controlled manner, designed specifically for complex neurosurgical cases.



SILVERGLIDE® BIPOLAR FORCEPS



- Reusable bipolar forcep range, a highly pure Silver bipolar instrument that eliminates sticking of tissues to bipolar forceps
- Silver plating conducts energy away from the tips 37 times faster than stainless steel to keep the tips cool and the surgeon working
- Product Lines: irrigating , standard , ProSeries, Keyhole Maximum Access
- Tip Sizes: 0.4mm,0.7mm,1 mm, 1.2mm,1.5mm,2mm
- Lengths: 14.5cm,16cm,19cm,22cm,24cm,28cm
- Single use
- Non-stick tips
- Dual irrigation

MICRODEBRIDER(ESSx)

Improved proprietary flush feature

- Surgeon can manually unclog handpiece using its own irrigation out flow allowing for quicker removal of clogs and decreased OR time

Max RPM in oscillation mode (standard)

- 5,000 RPM

Integrated scope cleaning

- Cleans the endoscope allowing for less manual cleaning during the case
- All straight blades are irrigated through the entire channel including the tip
- Improved ergonomics and balance
- Increased cutting efficiency



SharpEdge



Aggressive

Hooded Round Bur



Angled Aggressive Serrated 40°



Angled Aggressive Serrated 60°

NEURO-SPINE-ENT

NASOPORE® BIORESORBABLE NASAL DRESSINGS

- NasoPore®/OtoPore® is Entirely Synthetic Based
- NasoPore®/OtoPore® Composition Consists of a Proprietary Polymer Technology
- Predictable Degradation Appropriately sets Expectations for Both Patient and Surgeon
- Breaks Down into CO₂ , H₂O, O₂ and Polyamine (found in eukaryotic cells)

FRAGMENTATION

- Uniform clearance profile to drain from the sinunasal cavity via natural mucus flow



PORTMANN CHUCK (Skitter)

5100-120-044

Straight Portmann Chuck



5100-120-045

Angled Portmann Chuck



5100-015-034

Stapes Bur Pliers

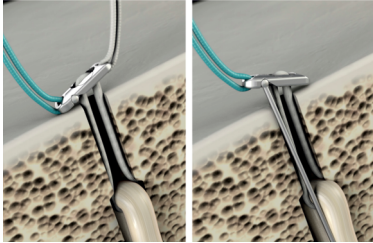




ARTHROSCOPY SOLUTION

KNEE SOLUTIONS

ACL (ANTERIOR CRUCIATE LIGAMENTS)



G LOK
(FIX LOOP 15,20,25,30 mm)



Procinch
(Adjustable Cartilage Fixation
for ACL & PCL Repair)



Biosteon (ha/plla) Wedge
Interference Screws



Titanium Wedge
Interference Screws



Fiber Tape x Braid TT
2.0 mm

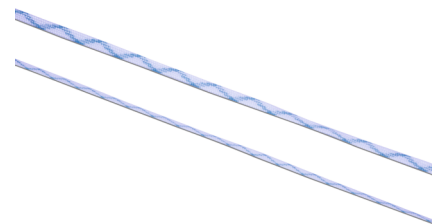
MENISCUS REPAIR SOLUTION



AIR – Stryker's all Inside
Meniscus Repair Device



Sharp Shooter - Stryker's Inside
Out Meniscus Repair System



Fiber Tape x Braid TT 1.2 mm

ARTHROSCOPY SOLUTION

SHOULDER SOLUTION

BANKART REPAIR



Iconix 1
(Single Loaded 1.4 mm
all Suture Anchor)



**Cinch Lock ss Knotless
Automatic Labrum
Restoration System**



**Nano Tack Flex
Anatomic Labrum
Restoration System**



**Tween Loop Peek
Anchor 3.5 mm**



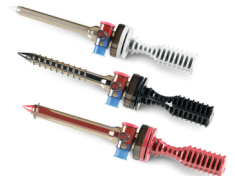
**Tween Loop Flax Anchor
3.5 mm (Flexible)**



**Titanium Wedge Anchor
3 mm**



**Silicon Cannula
(Gate Way)**



**Dri-lok Disposable
Cannula**

ROTATOR CUFF REPAIR



Iconix 2
(Double Loaded 2.3 mm
all Suture Anchor)



Iconix 3
(Triple Loaded 2.3 mm
all Suture Anchor)



**Peek Instraline Anchor
(5.5 mm, 6.5 mm)**



**Peek Zip Anchor
(4.5mm, 5.5mm, 6.5mm)**



**Reel X STT Knotless
Anchor System (4.5mm)**



**Fiber Tape x
Braid TT 2.0 mm**

ARTHROSCOPY SOLUTION

CAPITAL EQUIPMENT

ARTHROSCOPY SHAVER SET



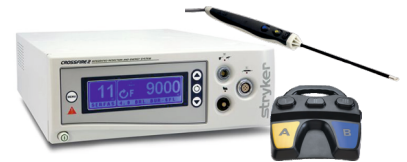
Core 2 console

CROSSFLOW INTEGRATED ARTHROSCOPY PUMP



Cross flow pump

CROSS FIRE 2 INTEGRATED RESECTION & ENERGY SYSTEM



Crossfire 2 console



Formula shaver hand piece

CUTTER (Size: 3.5 mm, 4.0 mm, 5.0 mm, 5.5 mm)



AGGRESSIVE PLUS



RESECTOR



TOMCAT

Small Joint Cutters & Burs (Size: 2.0 mm, 2.5 mm, 3.0 mm, 3.5 mm)



AGGRESSIVE CUTTER



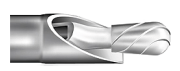
HOODED ABRASION BUR



LONG HIP AGGRESSIVE PLUS



LONG HIP TOMCAT



LONG HIP PEAR BUR (8 flute)

Hip Cutters & Burs (Size: 4.0 mm)

BURS (Size: 4.0 mm, 5.0 mm, 5.5 mm)



BARREL BURS (6 flute)



BARREL BURS (12 flute)



ROUND BURS (6 flute)



EGG BUR (6 flute)



SUBCHONDRAL DRILL

ARTHROSCOPY SCOPE SET

IDEAL EYE HD ARTHROSCOPY GENERATION INCLUDED (SPEED LOCK/ J LOCK)

- 1.9mm (0,30 degree)
- 2.3mm (0,30,70 degree)
- 2.7mm (0,30,70 degree)
- 4.0mm (0,30,70 degree)



ARTHROSCOPY SOLUTION

ARTHROSCOPY INSTRUMENTS

Conquest Family (Punch/Scissors/Graspers)



Champion Shoulder Instruments Set



Champion Suture Passer



Champion Slider Needle/Handle



Acl/pcl Instruments



Nano Pass Suture Manager (Crescent/45 Degree Left / 45 Degree Right)



Versitomic Flexible Reaming System



Champion Sling Shot (45 Degree Left/45 Degree Right/70 Degree Up)

Small Joint Instruments Set



Micro fx Ocd (Osteochondral Drill)





ORTHOPEADIC SOLUTION (HDSO)

SYSTEM 8 POWER TOOLS

A best in class product, for the best in class customers

System 8 Collect Family



**Dual Trigger Rotary
Hand piece piece (8205-000-000)**



**Sagittal Saw Hand piece
(8208-000-000)**



**Reciprocating Saw Hand piece
(8206-000-000)**



**Sternum Saw Hand piece
(8207-000-000)**



Precision Saw Hand piece(8209-000-000)



Lithium Ion Batteries

Long-lasting new High-capacity cells
22% higher energy
2X as many uses
30day shelf life

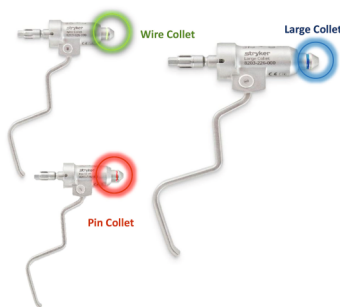


Universal Battery Charger

**8203-026-000 -
Dual trigger wire collet (0.7 -2.0mm)**

**8203-126-000 -
Dual trigger pin collet (2.0 -3.2mm)**

**8203-226-000 -
Dual trigger large collet (3.0 -4.2mm)**



Ezout Acetabular Revision System



83% less stress in the bone.
60% less bone loss after reaming.
Removes the cup in 3-5 minutes.
78% less physical exertion

System 8 – What's New ?



Water Resistant Hand pieces



Improved collet durability



V-Notch blade mount

ORTHOPEADIC SOLUTION (HDSO)

SYSTEM G POWER TOOLS

Your complete, one-system solution



Rotary Drill



Reciprocating Saw



Sagittal Saw



Charger, 2-Bay

POWER Module



Battery Current	12.6 Voltage
Cell Chemistry	Li-Ion
Handling	Aseptic
Weight	0.94 LBS (0.425 KG)
Run Time Average	30 Min (Normal Condition)
Charge Time	Up to 45 minutes

Rotary Drill Attachments

Color Coding on Chucks



Blue = Drilling Chuck

Red = Reaming Chuck



4103-110: AO Quick Connect



4103-131: 1/4 inch Jacobs



4103-160: Standard Trinkle



4103-135: Hudson Modified Trinkle



4103-133: Keyless Chuck



ORTHOPEADIC SOLUTION (HDSO)

Rotary Ream Attachments



4103-235: Hudson Modified Trinkle



4103-231: 1/4 inch Jacobs Reamer



4103-435: High Torque Hudson Modified



4103-213: Standard Hudson



4103-260: Trinkle Reamer

Stryker's System G Wire Collet (7307-001-000)



Stryker's System G Pin Collet, Small (7307-002-000)

Wires of size .71mm to 1.8mm

Stryker's System G Pin Collet, Large (7307-003-000)

Small pins of size 2.0mm to 3.2mm

Large pins of size 3.0mm to 4.2mm

Smart Pump Tourniquet System

A Constricting and Compressing Device That Is Used To Restrict the Arterial Blood Flow For A Period Of Time And Allows To Perform A Surgery In A Bloodless Operative Field

Procedures: Total Knee, Arthroscopy, ACL, Elbow, Wrist, Hand, Ankle, Feet

Color Cuff II

Sterile Disposable Tourniquets



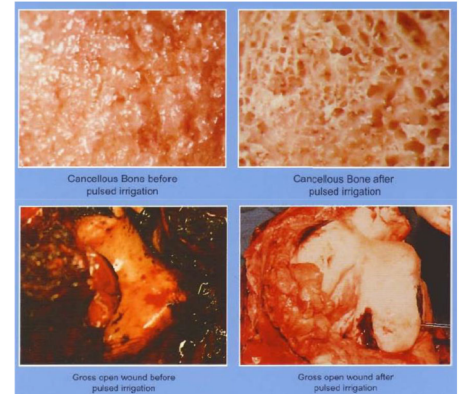
Color Cuff II
Reusable Tourniquets



ORTHOPEADIC SOLUTION (HDSO)

InterPulse: Pulsed Lavage

- To clean the bone clear of debris and blood and allow penetration of cement
- To take away foreign material from the wound site
- Spike and shoot method.
- Easy to use.
- Light weight and portable.
- Ergonomic shape to reduce muscle fatigue.
- High pressure
- Completely disposable.



Total Hip | Total Knee | Revision | Trauma | Wound Care | Washouts

Flyte® Steri-Shield Personal Protection System

The Flyte Personal Protection System provides class-leading AAMI Level 4 protection helping safeguard against contamination, exposure to infectious bodily fluids and transfer of microorganisms or particulate matter.



CUTTING ACCESSORIES

Saw Blades



Performance series blade



Heavy Duty Blades



Recip Saw Blades



Dual Cut Sagittal Blades

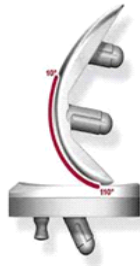


Sternum Saw Blades



RECON

Primary Knee Joint



**Partial (Unicondylar)
Triathlon PKR**



**Premium Knee Joint
Triathlon PS/CR/CS**

Complex Primary & Revision



**Femur & Insert-Primary
Tibia-Revision
Triathlon Complex Primary**



**Total Stabilizer
Triathlon TS**

Mega Prosthesis



Modular Rotating Hinge



GMRS Proximal Tibia



GMRS Distal Femur

RECON

Hemi Replacement



**Cemented Modular
Bipolar
Exeter UHR**



**Uncemented Modular
Bipolar
Accolade II UHR**



**Cemented Long Stem
Bipolar
Exeter UHR**



**Uncemented Long Stem
Bipolar
Restoration UHR**

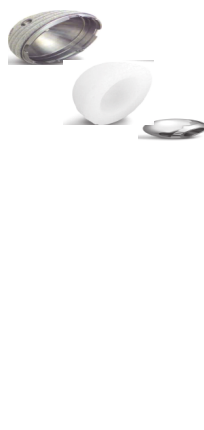
Primary Hip Replacement



**Cemented THR
Exeter Contemporary
Flanged Cup**



**Cemented THR
Exeter Rimfit X3 Cup**



**Uncemented THR
Trident Accolade
II MOP**



**Uncemented THR
Trident Accolade
II COP**



**Uncemented THR
Trident Accolade
II COC**



**Dual Mobility Hip system
MDM**

RECON

Revision Hip Replacement



Contemporary Flanged Cup



Acetabular Cage -GAP II



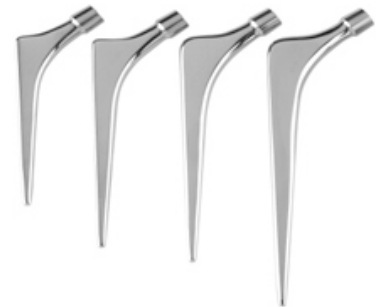
X3 Rimfit Cup



Wedges-Restoration



Constrained Liner – Trident



**Cemented Long Stem
Cement in Cement Revision Stem**



**Uncemented Long Stem
Restoration Modular**

BARD

Capsure

- Permanent fixation device with Atraumatic Cap
- Smooth Polyetheretherketone (PEEK) cap eliminates exposed metal tip & helps minimize adhesions to the fastener
- Reliable , Secure fixation regardless of mesh pore size
- Improved fixation with large pore meshes due to larger cap surface area of fastener.
- Available with 15 & 30 Tacks



Ventralight ST

- Dual layer tissue separating mesh
- Based on Sepra technology
- Easily tailored as per requirement
- Available in diff sizes (11.4 cm, 15 cm, 15x10 cm, 15x20 cm , 20 cm)

Ventralax ST

- Intraperitoneal umbilical hernia patch with straps for small umbilical hernias



3D Max

- Anatomical Mesh for lap inguinal hernia repair
- Easy to Deploy
- Minimize Fixation
- Available in diff Sizes (11x16 cm ,12x17 cm)

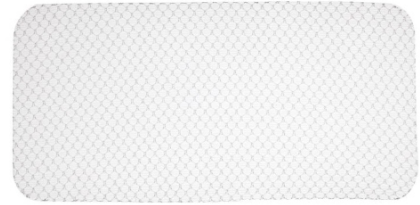




BARD

Soft Mesh

- Macroporous lightweight polypropylene mesh
- Available in different sizes
(7.5 x15 cm, 10x15 cm, 15x15 cm, 30x30 cm)



Sterilization Containers

- MMPL Sterilization containers made from hard anodized aluminium which ensures protection and sterility of instruments
- Available in a wide range of sizes to help speed up organization and set up of instruments

HAPPY ENDING :)

Sed do eiusmod tempor incididunt ut labore et dolore magna aliqua.
Quis ipsu
m suspendisse ultrices gravida. Risus c

ommodo viverra maecenas accumsan lacus vel facilisis.

Surgiworl Health Care Systems.

18,19,20 & 21, GF & First Floor, Galaxy Mall, Haridas Park, Nr. Ocean Park,
Nr. Vimanagar, Opp. BRTS Bus Stop, Nehrunagar, Satellite, Ahmedabad

 **+91 79 40030999**

 **surgiworl@gmail.com**

 **www.surgiworl.co.in**



**Scan to Download
e-Catalogue**

